

ADVANCED BANK MANAGEMENT

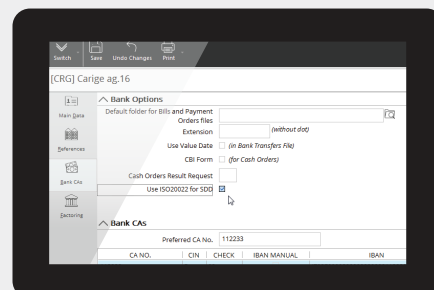
The new Mago4 Advanced Bank Management module allows you to generate the files for Credit Transfers and Direct Debits (SDD Core and B2B) directly in XML format, using the XML records valid within the SEPA area from February 1, 2014.

Advanced Bank Management of Mago4 also includes a specific procedure that enables you to print the SDD Mandates to be sent to the customer for subscription, even by mail.

All texts and reports used in this procedure are fully customizable. Keep your bank customers/suppliers database up-to-date. Mago4 specific procedure accesses via web services the updated files of Italian bank counters codes and numbers (Italian ABI and CAB codes), and simultaneously amends Mago4 data using the new list. In particular, you can download the complete file containing all bank branches, or you can download just the ones changed within the previous month.

Finally, to simplify the process, you can choose to target your updates. For example, you can add bank branches not yet recorded in the bank customers/suppliers database, or disable the deleted ones and those acquired by other banks.

The update will concern not only bank customers/suppliers database, but also all open documents and entries.



Company Banks

1**SPEED**

In addition to generating files in XML format within the SEPA area, you can already print the SDD Mandates to be sent to the customer.

2**CUSTOMIZATION**

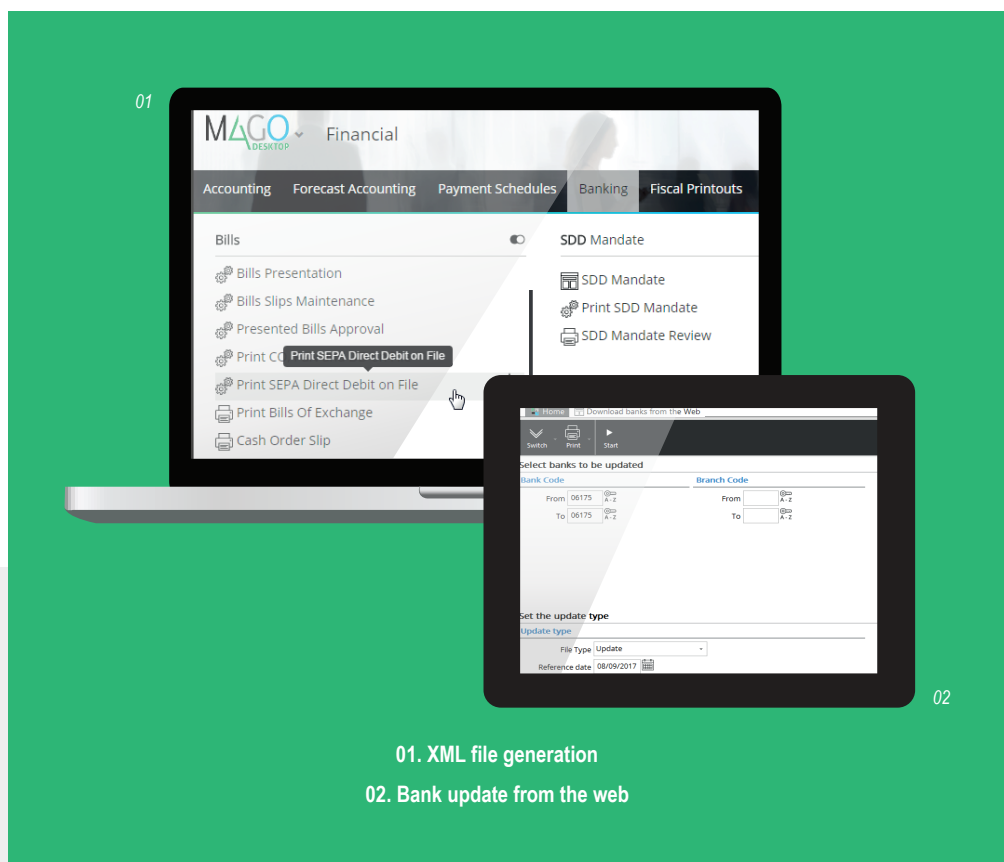
Texts and reports can be customized according to your needs.

3**ALWAYS UPDATED**

Access via web services means you have constantly updated database

4**EFFICIENCY**

Updates can be targeted to concern only what is really necessary.



For up-to-date information,
system and technical requirements
visit www.mago-erp.com

01. XML file generation

02. Bank update from the web

*Mago4 is available in 3 Editions to meet the real needs of all SMEs.
The Advanced Bank Management module is available for all Editions.*

Via Solferino, 1 - 26900 Lodi
Phone: +39 0371 59 42 444
E-Mail: info@zucchetti.com
www.mago-erp.com
www.zucchetti.com